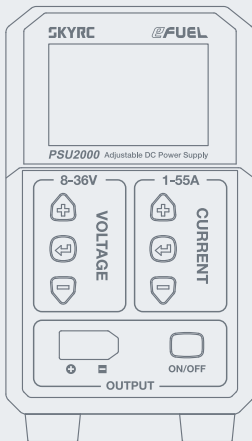


SKYRC

Instruction Manual

v. 26



eFUEL 2000W Power Supply

Introduction

Thank you for choosing the eFUEL 2000W, 55A AC/DC Switching Power Supply.

eFUEL 2000W is a high-power AC/DC switching power supply that converts household AC—either 100–120 V or 200–240 V—into an adjustable DC output ranging from 8 V to 36 V, delivering up to 55 A of continuous current.

With excellent thermal control and multiple protection mechanisms, it ensures efficient, stable, and safe operation. Whether in a workshop or a professional testing environment, the eFUEL provides reliable power support.

The DC output port has been upgraded from banana connectors to XT90 battery connectors, making it safer and more convenient to charge popular battery types while reducing the risk of reverse polarity.

The DC output port has been upgraded from banana connectors to XT90 battery connectors, making it safer and more convenient to charge popular battery types while reducing the risk of reverse polarity.

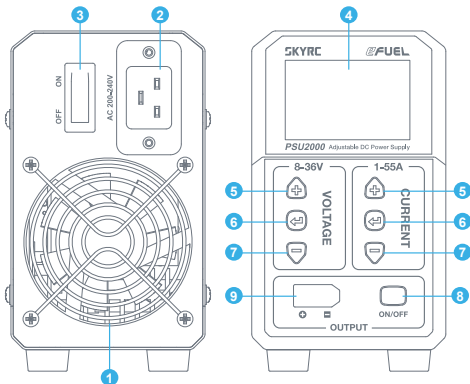
Caution

Input Voltage Attention:

**This device is offered in two dedicated AC input versions:
100–120 V or 200–240 V.**

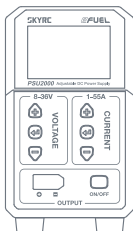
These models are not interchangeable—be sure to choose the correct version for your region or setup to avoid damage or malfunction.

Getting to know eFUEL 2000W



- 1 Cooling Fan**
- 2 AC Power Input**
- 3 Power Switch**
- 4 LCD Display**
- 5 + / Up Button:** Increase the value, or move up in the system Settings.
- 6 ↵ Enter/Start Button:** Enter or exit the voltage/current settings, or enter the system Settings.
- 7 - / Down Button:** Decrease the value, or move down in the system Settings.
- 8 DC Power Switch:** Turn the DC power supply on/off , or return to the main interface in the system Settings.
- 9 XT90 Female DC Output Port**

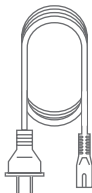
What's Included



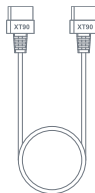
eFUEL 2000W Power Supply *1



Instruction Manual *1



AC Power Cord *1



SkyRC XT90-XT90 Charge Lead*1

Features

- Single high-current output supporting up to 55 A;
- Adjustable Output Voltage: 8V–36 V.
- LCD Display: Real-time indication of both output voltage and current;
- Smart Cooling Fan: Automatically adjusts based on internal temperature;
- Comprehensive Protection:
 - Over-current protection (OCP)
 - Over-temperature protection (OTP)
 - Short-circuit protection (SCP)
 - Over-load protection (OLP)

SAFETY INSTRUCTIONS

Warning: To reduce the risk of fire or electric shock, carefully follow all the instructions. This manual contains important safety and operating instructions for this power supply.

Before you use the power supply, read all the instructions and cautions markings in this manual of the power supply and the product that you will connect to the power supply to reduce the risk of injury:

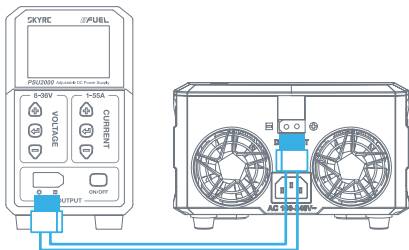
- Do not use the power supply near water (for example, a bathtub, washbowl, kitchen sink, laundry tub, wet basement, or swimming pool).
- Do not place the power supply on an unstable cart, stand or table. If the power supply falls, it could injure a person or cause severe damage to the power supply.
- Do not overload power outlets or extension cords. An overload can result in fire or electric shock.
- Do not disassemble this unit; take it to a qualified service technician when service or repair is required. Improper reassembly may result in a risk of electric shock or fire.
- Do not use an attachment not recommended. This could result in a risk of fire, electric shock, or injury to persons.
- Never push any object into the slot in the power supply. It could touch dangerous voltage points or short-out parts resulting in a fire or electrical shock.

Specifications

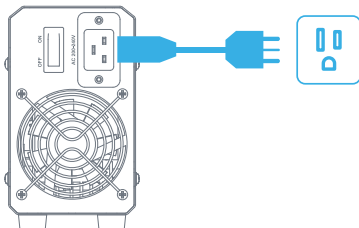
Item	Option	Specification
Input Voltage		AC200V~AC240V AC100V~AC120V (Two versions are voltage incompatible)
Standby Power	AC220V	8W Max
	AC110V	5W Max
DC Nominal Output Power	AC220V	1980W $\pm 10\%$
	AC110V	1200W $\pm 10\%$
Output Voltage Range		8.0V~36.0V (Default 12V)
Output Current Range		1.0A~55.0A (Default 30A)
Voltage Accuracy		$\pm 1\%$
Current Accuracy		$\pm 1\%$
Output Overload		After switching to constant current (CC) mode, the output voltage drops to $\leq 5V$
Output Overcurrent		\geq set current* 1.02+2A e.g., set current 2A, $2*1.02+2=4.04$, current $\geq 4.04A+$
Conversion Efficiency	AC230V	$>85\%$
Operating Environment	Temp.	0°C~40°C
	Humidity	5%~75%RH non-condensing
Storage Environment	Temp.	-10°C~70°C
	Humidity	5%~75%RH non-condensing
Dimensions(L×W×H)		289x90x158mm
Weight		2.9kg

Operation Instructions

1. Ensure the power switch is OFF before connecting the device to the power supply.

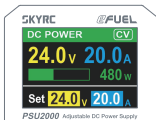


2. Plug the power supply into an AC outlet, then turn the power switch ON.

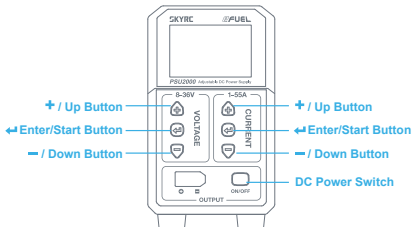


Operation Instructions

3. The LCD displays the realtime output voltage and current.



4. Short-press the “↵” button to enter the voltage or current editing mode. Use the “+” and “-” buttons to adjust the value. Then short-press the DC Power Switch to turn the DC output on.



Conformity Declaration

PSU2000 satisfies all relevant and mandatory CE directives and FCC Part 15 Subpart B.

Test Standard	Title	Results
EN-55032	Electromagnetic compatibility of multimedia equipment - Emission requirements	Conform
EN-55035	Electromagnetic compatibility of multimedia equipment - Immunity requirements	Conform
EN 61000-3-2	Electromagnetic compatibility (EMC) – Part 3-2: – Limits for harmonic current emissions (equipment input current up to and including 16 A per phase)	Conform
EN 61000-3-3	Electromagnetic compatibility (EMC) - Part 3-3: Limitation of voltage supply systems for equipment with rated current ≤ 16 A.	Conform
EN 62368-1	Audio/Video, information and communication technology equipment part 1: Safety requirement	Conform
FCC Part Subpart 15B	Title 47 Telecommunication PART 15 - RADIO FREQUENCY DEVICES Subpart B - Unintentional Radiators	Conform

Warranty and Service

Liability Exclusion

The power supply is designed and approved exclusively for the scenarios stated in this Instruction Manual. SkyRC accepts no liability of any kind if the power supply is used for any purpose other than that stated. We are unable to ensure that you follow the instructions supplied with the power supply, and we have no control over the methods you employ for using, operating, and maintaining the device. For this reason, we are obliged to deny all liability for loss, damage, or costs that are incurred due to the incompetent or incorrect use and operation of our products, or which are connected with such operation in any way.

Warranty and Service

Unless otherwise prescribed by law, our obligation to pay compensation, regardless of the legal argument employed, is limited to the invoice value of those SkyRC products which were immediately and directly involved in the event in which the damage occurred.

Warranty and Service

We guarantee this product to be free of manufacturing and assembly defects for a period of one year from the time of purchase. The warranty only applies to material or operational defects, which are present at the time of purchase. During that period, we will repair or replace free of service charge for products deemed defective due to those causes.

This warranty is not valid for any damage or subsequent damage arising as a result of misuse, modification, or as a result of failure to observe the procedures outlined in this manual.

Note:

1. The warranty service is valid in China only.
2. If you need warranty service overseas, please contact your dealer in the first instance, who is responsible for processing guarantee claims overseas. Due to high shipping costs, and complicated custom clearance procedures to send back to China, please understand that SkyRC can't provide warranty service to overseas end users directly.
3. If you have any questions which are not mentioned in the manual, please feel free to send an email to support@skyrc.com.

The manual is subject to change without notice; please refer to our website for the latest version!

SKYRC

The manual is subject to change without notice;
please refer to our website for the latest version!

Manufactured by
SKYRC TECHNOLOGY CO., LTD.

Floors 4, 5, & 8, Building 4, Meitai Technology Park, Guanguang South Road,
Guanlan, Longhua District, Shenzhen 518110, China

© 2025.10
www.skyrc.com

7504-2040-01

