

Instruction Manual

v. 30

SKYRC



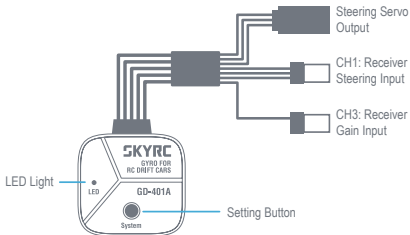
GD-401A

Gyro for
RC Drift Cars

Introduction

Thank you for choosing SKYRC GD-401A — a professional gyro designed specifically for RC model cars.

Powered by a 32-bit processor, GD-401A delivers fast and responsive data processing. The built-in high-precision gyro sensor ensures enhanced precision and stability. GD-401A is compatible with a wide range of RC car types, including on-road models, rally cars, and short-course trucks. It also features nine carefully tuned preset control curves, allowing rear-wheel-drive drift cars to adapt effortlessly to different tracks and driving conditions.



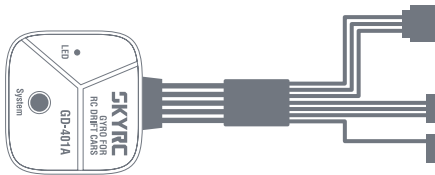
Features

- CNC aluminum. Tough, elegant, heat-efficient.
- Integrated cable. One-button setup. Easy install.
- Optimized sensitivity and gain algorithms ensure accurate, responsive control
- 9 curves for various drift scenarios
- Adjustable servo travel with $\pm 180^\circ$ endpoint setting
- One-touch reverse setup with 5-second steering direction correction

Specifications

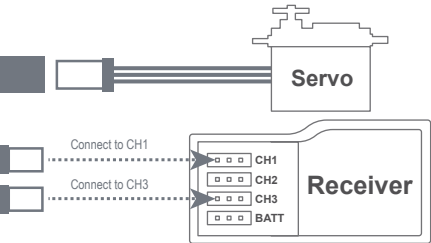
- Case Material: 6063 Aluminum
- Input Signal: PWM (50–333Hz)
- Operating Voltage: 4.8V–7.4V
- Output Signal to Servo: 1520 μ s (50–333Hz)
- Operating Current: 20mA @ 6V
- Operating Temperature: -10°C to 45°C
- Weight: 12g
- Dimensions: 22 × 21 × 9 mm

Gyro Connection



Note:

The transmitter must have a rotary knob to Channel 3.



Please refer to the wiring diagram for correct connection.

- To Servo: Use the 3-pin cable with FUTABA female connector to connect to the servo.
- To Receiver: Insert the 3-pin cable with FUTABA male connector into Channel 1 (CH1) of the receiver.

Gyro Direction

Adjusting the gyro direction changes its compensation behavior to match different servo orientations.

With the transmitter powered on and the receiver properly connected, press and hold the gyro button for 5 seconds.

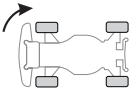
When LED flashes orange 4 times, the gyro direction will be reversed.



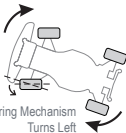
press and hold 5S

Correct working behavior:

When the car turns right, the front wheels should steer left to counteract the motion. When the car turns left, the front wheels should steer right.



When The Car Turns Right



Steering Mechanism Turns Left

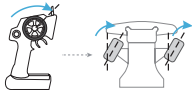
Servo Travel Setting

1. Entering Travel Setting Mode

First, turn on the transmitter while keeping the receiver powered off. Then, press and hold the gyro's setting button while powering on the receiver. After about 1 second, when the red LED flashes, release the button to enter Travel Setting Mode.

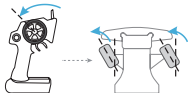
2. Left Endpoint Setting

Turn the transmitter steering wheel fully to the left, then short-press the setting button. LED will flash 5 times in orange, then LED will turn on in green, indicating that the left endpoint has been set.



3. Right Endpoint Setting

Turn the steering wheel fully to the right, then short-press the setting button again. LED will flash 5 times in orange, then LED will turn on in green, indicating that the right endpoint has been set.

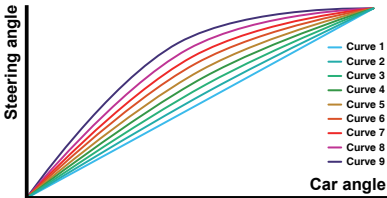


Cancel Travel Setting

Press and hold the button, then power on the receiver. When LED flashes in red slowly, release the button. Then, press and hold the button again until LED flashes in red rapidly, and release. This will clear the previously saved travel settings.

Curve Selection

The gyro offers 9 preset control curves, allowing you to adapt sensitivity to different racing conditions.



Sensitivity increases gradually from Curve 1 to Curve 9, ranging from mild to aggressive.

How to Select a Curve:

While the gyro is powered on, short-press the setting button once to advance to the next curve.

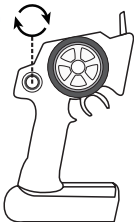
The curve level increases incrementally and loops from 9 back to 1.

Upon startup, the number of green LED flashes indicates the current curve setting.

Sensitivity Adjustment

Sensitivity can only be adjusted via a switch or dial assigned to Channel 3 or Channel 4 on the transmitter (transmitter setup required).

-100 ~ +100



When the CH3 dial is centered at 0, LED stays on in green and the gyro is inactive.

Turning the dial left from 0 (0 to -100) increases sensitivity in the negative direction — the further left, the stronger the gyro effect.

Turning the dial right from 0 (0 to +100) increases sensitivity in the positive direction — the further right, the stronger the effect.

LED Status Explained

LED	Status	Explanation
Green	Steady on	Operation completed
		Transmitter disconnected
	Flashing in a loop	LED flashes in a loop 1 to 9 times, indicating the current curve level.
Red	Flashing	Adjustment Mode Enabled
		No signal received by the gyro; transmitter is not powered on.
Orange	Flashing	Servo Travel Setting Indication

Warranty and Service

Liability Exclusion

This charger is designed and approved exclusively for use with the types of battery stated in this Instruction Manual. SkyRC accepts no liability of any kind if the charger is used for any purpose other than that stated. We are unable to ensure that you follow the instructions supplied with the charger, and we have no control over the methods you employ for using, operating, and maintaining the device. For this reason, we are obliged to deny all liability for loss, damage, or costs that are incurred due to the incompetent or incorrect use and operation of our products, or which are connected with such operation in any way. Unless otherwise prescribed by law, our obligation to pay compensation, regardless of the legal argument employed, is limited to the invoice value of those SkyRC products which were immediately and directly involved in the event in which the damage occurred.

Warranty and Service

We guarantee this product to be free of manufacturing and assembly defects for a period of one year from the time of purchase. The warranty only applies to material or operational defects, which are present at the time of purchase. During that period, we will repair or replace free of service charge for products deemed defective due to those causes. This warranty is not valid for any damage or subsequent damage arising as a result of misuse, modification, or as a result of failure to observe the procedures outlined in this manual.

Note:

1. The warranty service is valid in China only.
2. If you need warranty service overseas, please contact your dealer in the first instance, who is responsible for processing guarantee claims overseas. Due to high shipping costs, and complicated custom clearance procedures to send back to China, please understand that SkyRC can't provide warranty service to overseas end users directly.
3. If you have any questions which are not mentioned in the manual, please feel free to send an email to support@skycrc.com

SKYRC

The content is subject to change without notice;
please refer to our website for the latest version!



<https://www.skyrc.com>

If you have any questions about this document, please contact SkyRC by sending a message to **support@skyrc.com**

SKYRC ® is a trademark of SkyRC Technology Co., Ltd.

© 2026 SkyRC Technology Co., Ltd.

7504-2049-02